

Into the Blue

John Kember

🎹 Level 45/100 (Ambitious)

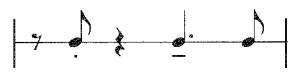
Get your OKTAV Premium subscription today!

Simply buy this title or go for an OKTAV Premium subscription. This way you'll enjoy unlimited access to our entire sheet music library for a flatrate - adjusted to your skills.

[Learn more](#)

13. INTO THE BLUE

Two features are explored here: the crisp rhythmic patterns in the opening and closing sections:



and the dependence on the left hand for the chord sequence. The middle variations are based on a four-bar/measure sequence which is repeated five times.

♩ = 132 (swing ♩ = $\frac{3}{4}$)

4

f

Gm Gm Gm/F# Gm/F

4

Cm Cm/B \flat Cm/B \flat Cm 6 /E \flat E \flat m B \flat /F

7

mf

optional

Em 7 5 E \flat maj7-5 D 7 sus 4 D 7 Gm Gm/F

10

Em 7 b5 E \flat o7 B \flat /D *sim.* D \flat o7 Cm 9 F 7

13

Gm Gm/F Em 7 b5 E \flat o7 B \flat /D D \flat o7

16

Cm 11 F 7 Gm Gm/F Em 7 b5 E \flat o7