



Farewell To Yokohama

Larry Coleman

🎵 Level 45/100 (Ambitious)

Get your OKTAV Premium subscription today!

Simply buy this title or go for an OKTAV Premium subscription. This way you'll enjoy unlimited access to our entire sheet music library for a flatrate - adjusted to your skills.

[Learn more](#)

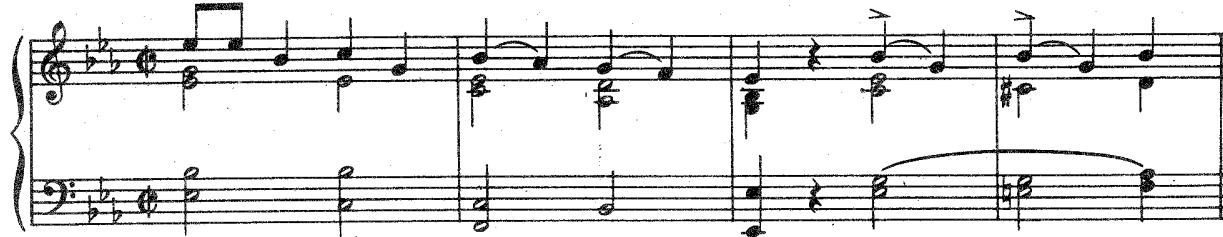
FAREWELL TO YOKOHAMA

Lyric by
NORMAN GIMBEL

Tune Ukelele
A D F# B

Music by
LARRY COLEMAN

Brightly



VERSE



1. Spent man-y a year in man-y a land-fought man-y a bar room bat-tle — But
 2. (There's) lit-tle I've missed, the wom-en I've kissed from Ire - land to A - las-ka — But
 3. (In) sun-ny Ca - pri the pret-ty, blue sea is hug-gin' the shore so tight-ly — I
 4. (I'm) tell-in' ya' true, I'm tell-in' ya' clear, I'm tell-in' ya' now, so hear me — I'll



no, no, nev-er would I ev-er have known I'd set-tle in Se - at - tle.
 one took o - ver, tho' I'll nev-er know how - when I get back I'll ask her.
 love the view, but what I rath-er would do is hug and kiss her night-ly.
 no, no, nev-er ev - er wan-der a - gain as long as she'll be near me.



Copyright 1951 by Odette Music Corp., 1619 Broadway, New York 19, N.Y.

Chappell & Co. Ltd., 50 New Bond Street, London, W.1.

For all Countries and Territories now forming part of or comprising the British Empire and Commonwealth (except Canada and Newfoundland) and Eire, Israel, Burma and Scandinavia

Any arrangement or adaptation of this composition without the consent of the owner is an infringement of copyright

All rights reserved
 International Copyright Secured
 MADE IN ENGLAND
 42270