



I Chose To Sing The Blues

Ray Charles

🎵 Level 55/100 (Ambitious)

Get your OKTAV Premium subscription today!

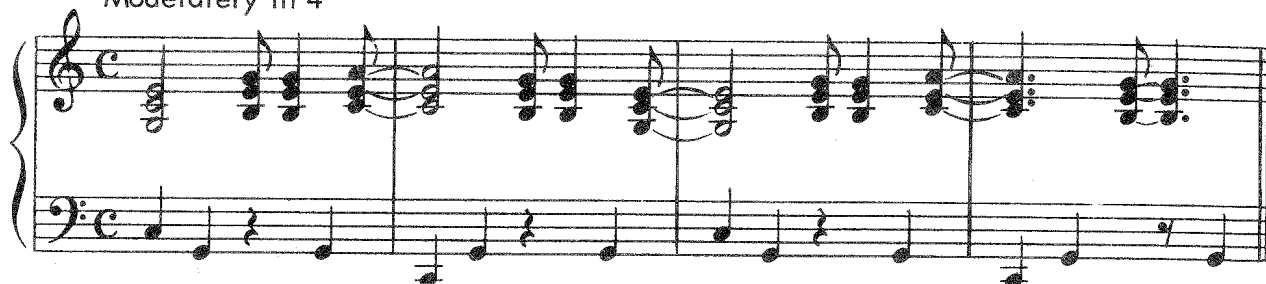
Simply buy this title or go for an OKTAV Premium subscription. This way you'll enjoy unlimited access to our entire sheet music library for a flatrate - adjusted to your skills.

[Learn more](#)

I CHOSE TO SING THE BLUES

words and music by
JIMMY HOLIDAY and RAY CHARLES

Moderately in 4



Now I could-a been a gam-ble 'cause I'm good with the cards, I

mf

C

The first line of the song is in 4/4 time. The treble staff has a key signature of one flat (Bb) and a common time signature (C). The bass staff has a key signature of one flat (Bb) and a common time signature (C). The melody is composed of eighth and quarter notes, with a steady bass line. The lyrics are: "Now I could-a been a gam-ble 'cause I'm good with the cards, I". The dynamic marking is *mf*. The chord marking is C.

could-a been a lov-er break-in' oth-ers hearts, But I feel so sill-y

F

The second line of the song is in 4/4 time. The treble staff has a key signature of one flat (Bb) and a common time signature (C). The bass staff has a key signature of one flat (Bb) and a common time signature (C). The melody is composed of eighth and quarter notes, with a steady bass line. The lyrics are: "could-a been a lov-er break-in' oth-ers hearts, But I feel so sill-y". The chord marking is F.

Copyright © 1966 by Metric Music Company, 1556 N. La Brea Ave., Hollywood, Calif. 90028

Metric Music Ltd., 50 New Bond Street, London, W. 1.

International Copyright Secured

All Rights Reserved

Made in England

24212

Any arrangement or adaptation of this composition without the consent of the owner is an infringement of copyright
The performance of any parodied version and the use of the lyrics of this song with any other music is expressly prohibited