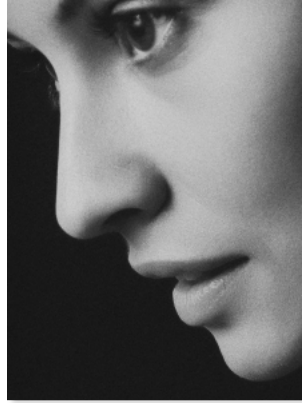


Ø K T A V



Hey, You Face Crew Cuts

♪ Nivel 40/100 (Intermedio)

¡Consigue hoy tu suscripción OKTAV Premium!

Solo tienes que comprar este título o conseguir una suscripción OKTAV Premium. Así disfrutarás de acceso ilimitado a nuestra gran biblioteca de partituras que se ajustan a tu nivel a coste fijo.

Más información

Ø K T A V
www.oktav.com

HEY, YOU FACE

Words and Music by
 J. P. LYNN
 EDDIE WHITE
 and MACK WOLFSON

Moderato with a beat

The piano introduction consists of two staves. The right hand plays a rhythmic melody of eighth notes, while the left hand provides a bass line with chords and single notes. The dynamic marking is *mf*.

KEY C

The first system of the song features a vocal line and piano accompaniment. The vocal line is in treble clef with lyrics: "Swing a ding a dong, Swing a ding a dong, Swing a ding a dong doo." The piano accompaniment is in grand staff with a dynamic marking of *mp*. Chords C, G7, and C are indicated below the piano part.

The second system of the song features a vocal line and piano accompaniment. The vocal line is in treble clef with lyrics: "Hey, You Face, Where ya go-in with that chas-sis,". The piano accompaniment is in grand staff. Chords C and G7 are indicated below the piano part.

The third system of the song features a vocal line and piano accompaniment. The vocal line is in treble clef with lyrics: "Hey, You Face, Swing a ding a ding dong las-sie,". The piano accompaniment is in grand staff. Chord C is indicated below the piano part.

Copyright © 1957 by Sequence Music Inc., 48 West 48th Street, New York, N.Y.
 SHELDON MUSIC, 50, New Bond Street, London, W.1.

Any arrangement or adaptation of this composition without the consent of the owner is an infringement of copyright
 and the performance of any parodied version is strictly prohibited

INTERNATIONAL COPYRIGHT SECURED
 PRINTED IN ENGLAND

11006