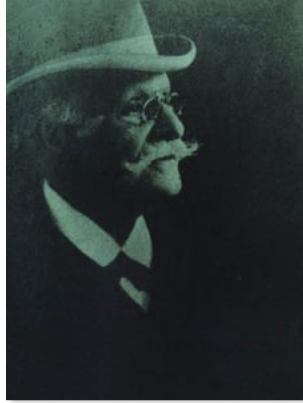


Ø K T A V



## *Les Patineurs (The Skater's Waltz)*

Émile Waldteufel

♪ Niveau 65/100 (Avancé)

***Prends ton abonnement OKTAV Premium dès aujourd'hui !***

Il suffit d'acheter ce titre ou de souscrire à un abonnement OKTAV Premium. Avec cette formule, tu bénéficieras d'un accès illimité à notre bibliothèque de partitions - adapté à ton niveau.

En savoir plus

Ø K T A V  
www.oktav.com

# LES PATINEURS

(THE SKATER'S WALTZ)

EMILE WALDTEUFEL

Intro. *Andante* *p* *a tempo* *brillante*

The first system of the piano introduction consists of two staves. The treble staff begins with a half rest, followed by a series of eighth notes. The bass staff starts with a half note, then a quarter note, and continues with eighth notes. Dynamic markings include *p* (piano) and *a tempo*. The word *brillante* is written above the treble staff. There are two eighth-note rests marked with an '8' and a dotted line above them.

*ff* *tremelo* *tr*

The second system continues the piano introduction. The treble staff features a series of eighth notes with a trill (*tr*) at the end. The bass staff has a series of eighth notes. Dynamic markings include *ff* (fortissimo) and *tremelo*. There is an eighth-note rest marked with an '8' and a dotted line above it.

*f p a tempo* *espressivo* *ben legato*

The third system shows the piano introduction continuing. The treble staff has a series of eighth notes. The bass staff has a series of quarter notes. Dynamic markings include *f p a tempo* and *espressivo*. The word *ben legato* is written above the treble staff. There are two eighth-note rests marked with an '8' and a dotted line above them.

*Red.* \*

The fourth system continues the piano introduction. The treble staff has a series of eighth notes. The bass staff has a series of quarter notes. There are two eighth-note rests marked with an '8' and a dotted line above them. The word *Red.* is written below the bass staff, followed by an asterisk.

*poco a poco diminuendo* *ritard.* *pp*

The fifth system concludes the piano introduction. The treble staff has a series of eighth notes. The bass staff has a series of quarter notes. Dynamic markings include *poco a poco diminuendo*, *ritard.* (ritardando), and *pp* (pianissimo). There are two eighth-note rests marked with an '8' and a dotted line above them. The word *Red.* is written below the bass staff, followed by an asterisk.