

Into the Blue

John Kember

♪ Livello 45/100 (Ambizioso)

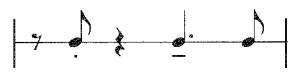
Abbonati a OKTAV Premium oggi stesso!

Basta acquistare questo titolo o sottoscrivere un abbonamento a OKTAV Premium. In questo modo potrai godere dell'accesso illimitato alla nostra intera libreria di spartiti ad un prezzo fisso, in base alle tue competenze.

Scopri di più

13. INTO THE BLUE

Two features are explored here: the crisp rhythmic patterns in the opening and closing sections:



and the dependence on the left hand for the chord sequence. The middle variations are based on a four-bar/measure sequence which is repeated five times.

♩ = 132 (swing ♩ = $\frac{3}{4}$)

4 *f* *Gm* *Gm* *Gm/F#* *Gm/F*

7 *Cm* *Cm/B \flat* *Cm/B \flat* *Cm 6 /E \flat* *E \flat m* *B \flat /F*

10 *Em 7 5* *E \flat maj7-5* *D 7 sus 4* *D 7* *Gm* *optional* *Gm/F*

13 *Em 7 b5* *E \flat o7* *B \flat /D* *sim.* *D \flat o7* *Cm 9* *F 7*

16 *Gm* *Gm/F* *Em 7 b5* *E \flat o7* *B \flat /D* *D \flat o7*

Cm 11 *F 7* *Gm* *Gm/F* *Em 7 b5* *E \flat o7*