



## *Where The Black Eyed Susans Grow*

Beatrice Lillie

♪ Niveau 60/100 (Gevorderd)

### ***Word vandaag nog lid van OKTAV Premium!***

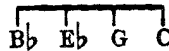
Koop moeiteloos deze titel of ga gelijk voor een OKTAV Premium-abonnement. Hiermee geniet je van onbeperkte toegang tot onze volledige bladmuziekbibliotheek tegen één vast tarief – bovendien wordt onze collectie speciaal afgestemd op jouw vaardigheden.

[Meer leren](#)

# WHERE THE BLACK EYED SUSANS GROW

Words by  
DAVE RADFORD

Tune Ukulele



Music by  
RICHARD A WHITING

Key Ab  
{,re:m ,re }

Moderato

I know a  
Her daddy's

plain old-fashion'd farm-house  
just a plain old farm-er,

Down a pret-ty lit-tle  
Mother's just a farmer

lane;.....Where yel-low daisies make a  
too;..... They surely rais'd some pret-ty

path-way  
Daisy

To the fields of golden grain..... There a lit-tle girl is wait-ing, Where I  
When they rais'd my lit-tle Sue..... You may have your pret-ty Ros-es, Vi-o-

found her years a - go;      Some-thing tells me that I'm welcome Where the Black-eyed Susans grow.  
-lets and Pan-sy's too,      You can keep your snow-white Lil-ies      I will leave them all to you.

Chords: Ab, Ab<sup>o</sup>, Bbm7, Eb7, Bbm, F7, Bbm, Eb7, Eb<sup>+</sup>, Ab, Bb7, 5#, Eb, Bb7, Eb<sup>+</sup>, Bb7, 5#, Eb, Bb7, Eb7